

Talkin' Testing

Assessment & System Performance | May, 2022

Hold the Handlebars: Spring Testing Windows Closing

It's been a remarkable school year and our students and staff have shown great resilience. Thank you for your attention to others' needs while using every ounce of your energy to guide, support, and care.

Some standardized assessment windows have closed while we're also in our final stretch to demonstrate student growth since the fall. Here are our spring windows and deadlines:



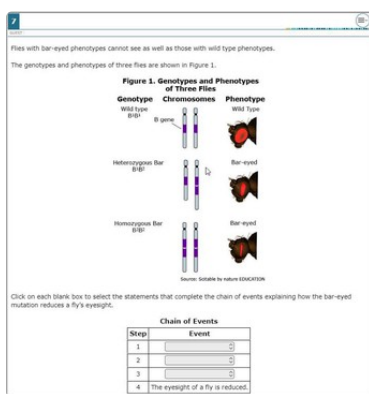
- **ISAT by Smarter-Balanced** (ELA/Math; grades 03-08, 10): **CLOSED**
- **ISAT Science** (Science; grades 05/08/11): **CLOSED**
- **Idaho Reading Indicator by iStation** (Reading; grades KG-05): Open through May 31st at 4:00PM;
- **Civics Assessment** (Civics; grades 07-12): Open through May 31st (remote assessment available) at 4:00PM;
- **i-Ready Mathematics** (Math; grades KG-05): Open through May 31st (remote assessment available during school hours);
- **Illuminate FastBridge** (English language arts/mathematics for grades 06-12 excluding AP): Open through May 31st (remote assessment available).

Because of reporting requirements, we are unable to provide an extension to these windows.

You can track progress toward our 100% completion goal for [spring assessments](#) and how we ended for the [ISAT](#) in the links provided.



Kootenai County and the Coeur d'Alene region has numerous trails and paths for you to get out and enjoy during these early spring months. For a complete listing, [visit the city's website](#) or click [on this interactive map](#). Also, consider taking your family for a [ride on the Hiawatha Trail](#) on the border between Idaho and Montana.



Stationary: No Science Results 'Til July

While our students in grades 05/08 and 11 took an ISAT Science assessment this year, we will not have scores for that exam until July as the State Board of Education has not yet set performance levels for the exam.

What does that mean? The content of the exam has been reviewed and vetted by our State Department of Education and our statewide review committee, but the determination of which score level lands in a particular level has not occurred (e.g. is a score of 2500/3000 at level 1, 2, 3, or 4)? Once this review occurs, we will report results to our school communities as well as parents/guardians.

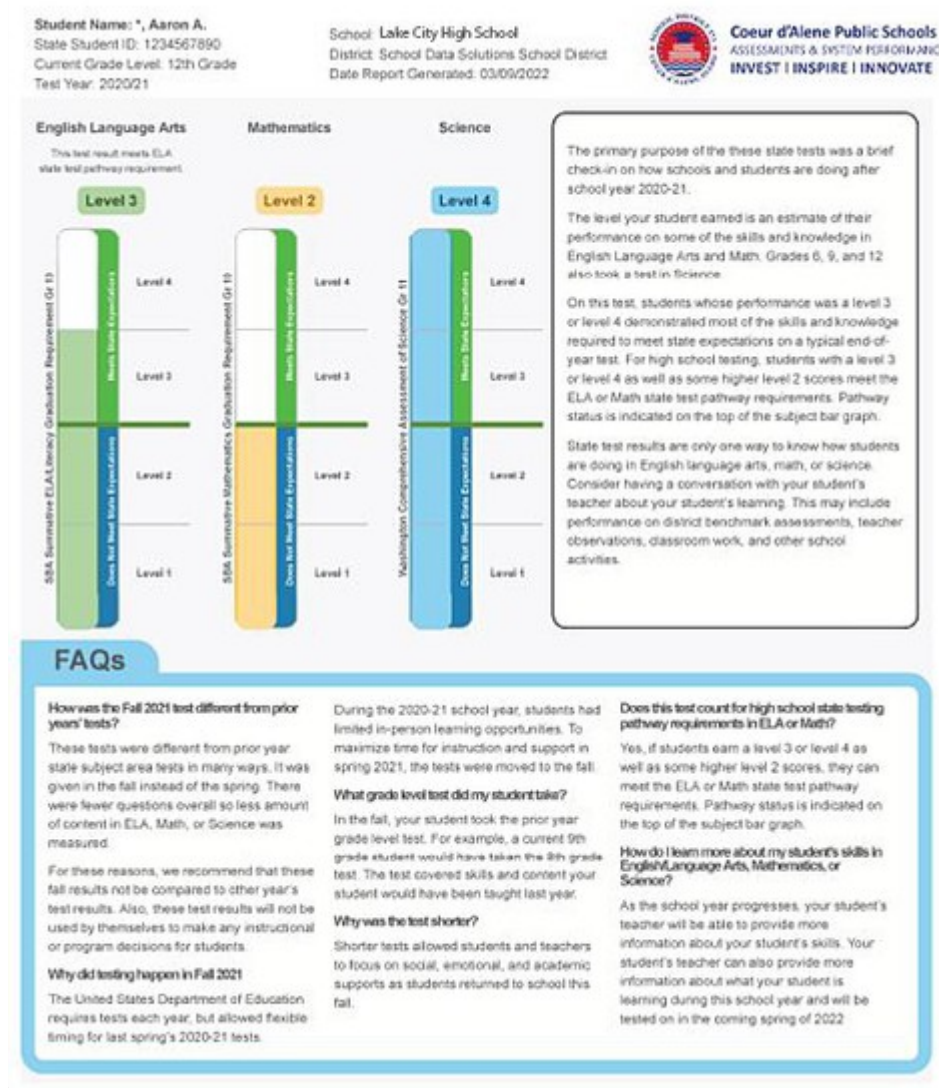
Wheelie Good: Electronic Reporting of ISAT Scores Coming

We are required by state statute to provide assessment reports to students/parents/guardians within 30 days of receipt. However, with the quick turnaround time, the approaching end of the school year, and the closing of the district's Print Shop, we are attempting electronic score report delivery of ISAT scores for Saturday, June 4th. Reports for IStation, i-Ready, and Fastbridge will still be printed by office staff for distribution at the end of the calendar year.



Our district will also send emails to parents/guardians with interpretation guidance for i-Ready, IStation, and FastBridge a few days after the expected delivery.

A sample of the email score report is available below:

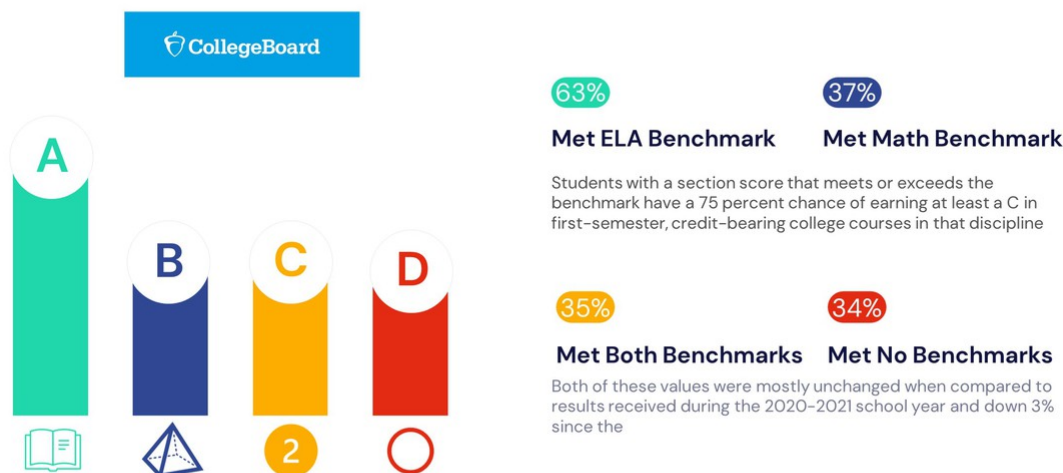


INFOGRAPHIC OF THE MONTH

For every PSAT/SAT exam taken, the district is able to look at the percentage of students who are at/above the [college and career-readiness benchmark](#), a level at which a student has a high probability of success of passing collegiate level coursework. The graphs below show results for the current Juniors who recently took the SAT in April:

Percentage of Juniors Meeting College Board Benchmarks

As measured by the April administration of the Schoolday SAT; 690 Current Juniors (89% of population) took the exam.



No Re-Tire-Ment: Assessment Program to Add Title/504

As part of a district office reorganization, the Director of Assessment and System Performance will take on additional duties this coming school year. Mrs. Kate Keinert, the Director of Equity and Federal Programs is returning to her elementary roots as incoming assistant principal of Northwest Expedition Academy. Her current responsibilities around:

- federal funds, including Title resources that support reading intervention programs, homeless, Indian education, and district professional development;
- medical 504 plans; and
- intervention and the development of an MTSS framework.

will be merged into the current job responsibilities held by Mike Nelson.



Changing Gears?: Proposal Made to Remove EOCAs

For over 20 years, the requirement to provide an end-of-course assessment has lived in district [administrative procedure 2620P](#). The current wording requires all secondary teachers to provide a singular exam worth 15% of a student's grade for each academic term.

However, our adopted Comprehensive Assessment Framework asks us to move away from this practice and, instead, institute common formative assessments. We intend this practice to start with our secondary mathematics courses for the 2022-2023 year, expanding to other content areas in subsequent years as part of the curriculum development process. This does not mean, however, that individual teachers would not be allowed to include a final summative assessment worth a percentage of the overall score calculation if clearly defined and communicated in the syllabus.

Director of Assessment and System Performance provided information to the trustees during a recent [Board workshop \(beginning at 1:47:30 on the recording\)](#) that provides the rationale for the decision. Their consideration is expected within a month.



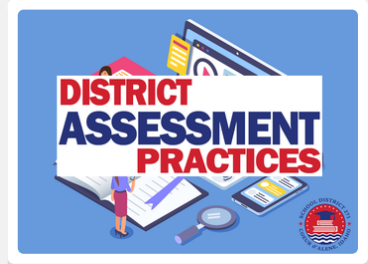
Bill of Rights

Decisions around assessments are grounded in our [Student Assessment Bill of Rights](#) which ensures that students understand why we choose to assess and how the results will be used.



Coming This Fall

Our district will be continuing to follow the goals of our [Comprehensive Assessment Plan](#) with greater emphasis in 2022-2023 on common formative assessments and developing opportunities for performance assessment.

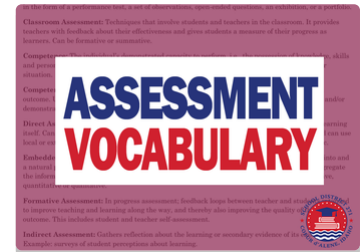


Tight and Loose?

Which assessment practices are held loosely (lots of flexibility) and which are held tightly (limited/no flexibility)? Our [District Assessment Practices](#) provides a table on page 5.

Find Your Balance: Review Common Assessment Vocabulary

Educators are notorious for using acronyms and jargon in their work. Just think about how many I-leading acronyms there are in the assessment world! To help, we've provided a [list of vocabulary words and definitions](#) on the district website under Departments > Assessments.

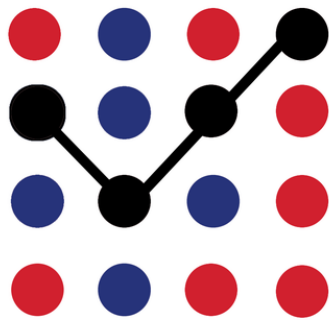




THANKS

FOR A GREAT SCHOOL YEAR

Enjoy a restful summer break.



**ASSESSMENT
& SYSTEM PERFORMANCE**

Contact Us

@cdaguyinbowtie

Our team is very willing to support you at any time. Reach out as you may need support.

1400 North Northwood Center ...

10006

testing@cdaschools.org

my.cdaschools.org